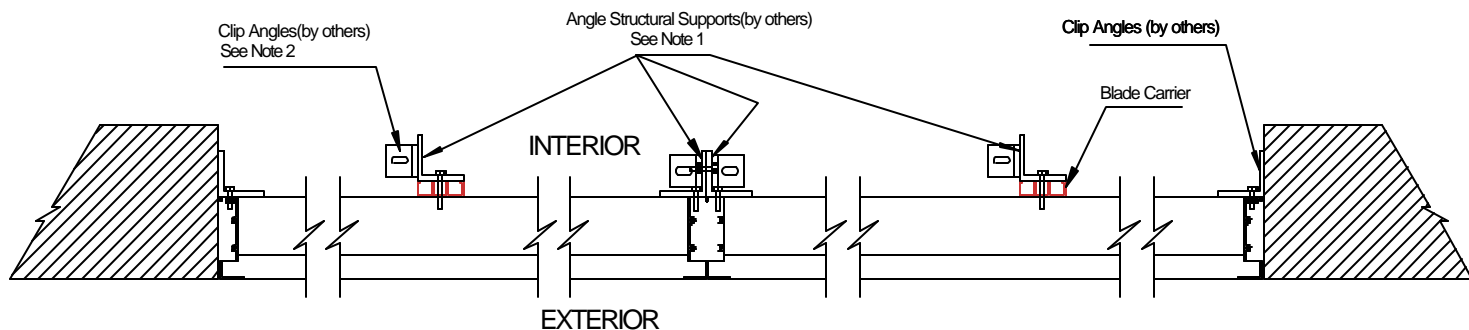


MULTIPLE SECTION LOUVER- SPLIT VERTICALLY-VISIBLE MULLIONS



WHEN INSTALLING FROM INTERIOR SIDE OF OPENING, THE END PANELS ARE FABRICATED WITH VISIBLE JAMB SECTIONS ON BOTH ENDS AND A BLADE CARRIERS AT THE MAXIMUM FO 5 FT CENTERS.

INSTALL ONE END PANEL FIRST BY MOUNTING CLIP ANGLES & FASTENERS TO THE LOUVER & WALL SYSTEM AROUND INTERIOR PERIMETER. CONTINUE INSTALLING WITH ADJUCENT INTERMEDIATE PANELS BY BOLTING PANELS TOGETHER AT SUPPORT ANGLES. EACH INTERMEDIATE PANEL ALSO NEEDS TO BE MOUNTED TO THE OPENING AT BOTH HEAD AND SILL FRAME MEMBERS. AFTER INSTALLING ALL INTERMEDIATE PANELS AS DESCRIBED, FINISH BY INSTALLING OPPOSITE END PANEL.

NOTE 1:
ANGLE STRUCTURAL SUPPORTS FASTENED AT 18" CENTERS TO THE BLADE CARRIER AND VISIBLE MULLIONS.

NOTE 2:
CLIP ANGLES ON INTERIOR SIDE OF OPENING FASTENED AT 18" CENTERS AROUND THE ENTIRE OPENING PERIMETER AND NO FURTHER THAN 3" FROM THE CORNER OF EACH PANEL.

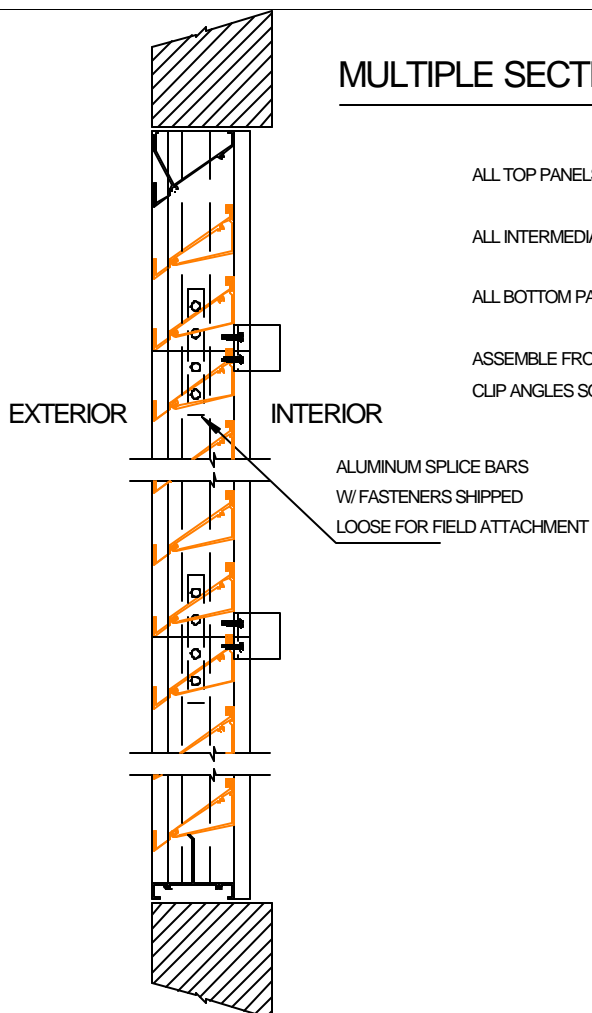
MULTIPLE SECTION LOUVER - SPLIT HORIZONTALLY

ALL TOP PANELS HAVE A HEAD FRAME MEMBER AND NO SILL MEMBER.

ALL INTERMEDIATE PANELS HAVE NO HEAD OR SILL FRAME MEMBER AND NO SILL MEMBER.

ALL BOTTOM PANELS HAVE A SILL FRAME MEMBER AND NO HEAD MEMBER.

ASSEMBLE FROM BOTTOM TO TOP BY ATTACHING SPLICE BARS TO THE JAMBS AND ATTACHING CLIP ANGLES SO THAT THEY SPAN THE GAP BETWEEN MULTIPLE SECTIONS



OPENINGS THAT REQUIRE MULTIPLE LOUVER PANELS IN BOTH WIDTH AND HEIGHT WILL REQUIRE INTERNAL STRUCTURAL SUPPORTS. IT IS RECOMMENDED THAT LARGE QUANTITIES BE DIVIDED WITH STRUCTURAL MEMBERS SO THAT THE LOUVERS WILL SPAN EITHER WIDTH OR HEIGHT WITH A SINGLE PANEL. UNUSUALLY HIGH WIND LOADING MAY REQUIRE STRUCTURAL SUPPORTS OF NON-MULTIPLE WIDE AND MULTIPLE HIGH ASSEMBLIES. STRUCTURAL SUPPORTS AND MOUNTING ACCESSORIES ARE AVAILABLE AS OPTIONAL EQUIPMENT FROM LOUVER MANUFACTURER. (AT EXTRA CHARGE)



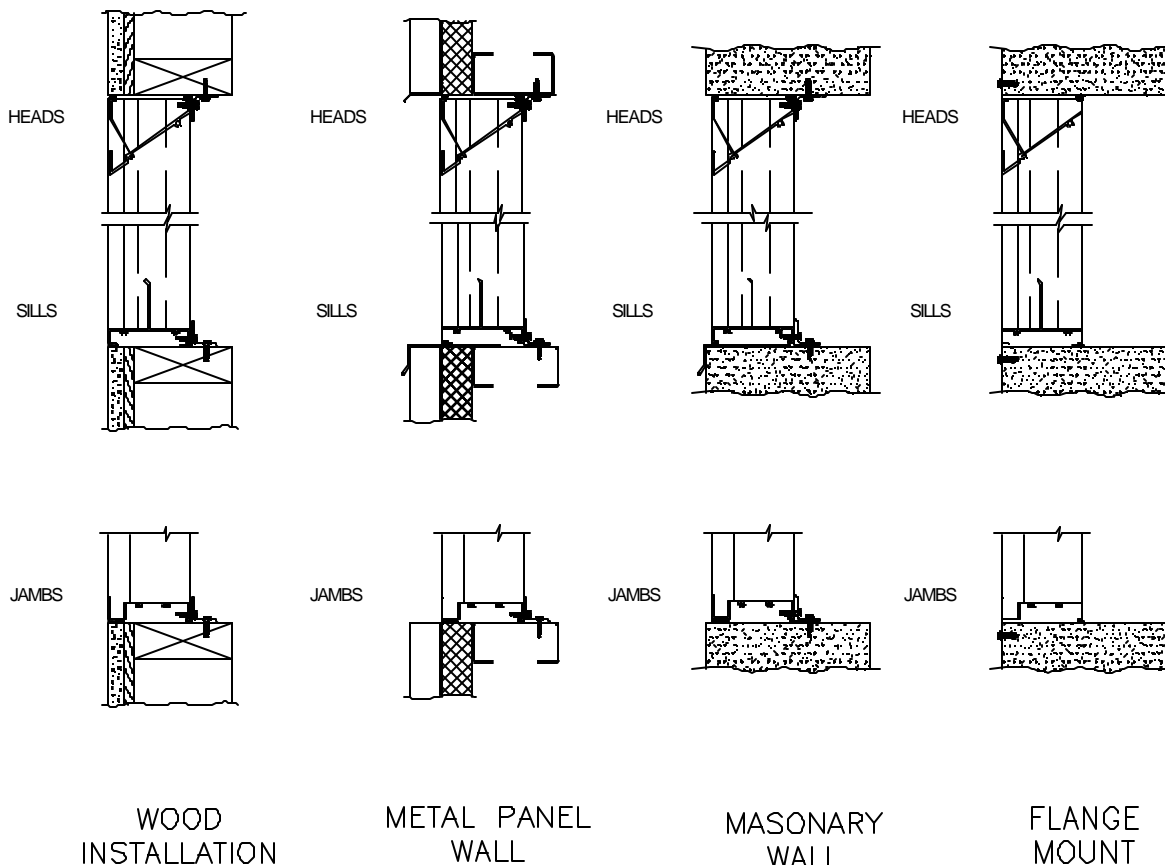
MULTIPLE SECTION INSTALLATION INSTRUCTIONS

REV 3

DATED: MAY 2003

PAGE 1 of 2

DATED: DEC 2002



1. ALL MOUNTING FASTENER TO OPENINGS, SEALANT, SHIMS, MASONRY, ANCHORS, ETC, ARE NOT SUPPLIED OR INSTALLED BY VENTEX.

2. CLIP ANGLES, MOUNTING PLATES, FASTENERS TO LOUVERS ONLY, AND STRUCTURAL SUPPORTS ONLY CAN BE PROVIDED AT AN ADDITIONAL COST. PLEASE CONSULT FACTORY FOR PRICING.

3. RECOMMENDED MOUNTING FOR DEEP WALL OPENINGS, AS A MINIMUM USE 1 1/2 x 1 1/2 x 1/8" CONTINUOUS OR CLIP ANGLES ON INSIDE PERIMETER OF LOUVER FRAME WITH 1/4" DIAMETER FASTENERS ON MAX 18" CENTERS. THE LOCATION OF 1/4" DIAMETER MOUNTING ANCHOR BOLTS SHOULD BE SUCH AS TO GIVE MINIMUM OF 2 BOLTS ON A SIDE.

4. RECOMMENDED MOUNTING NARROW WALL OPENINGS, AS A MINIMUM USE 1 1/2 x 3 x 1/8" MOUNTING PLATES OR CONTINUOUS PLATE ON INSIDE PERIMETER OF LOUVER FRAME WITH 1/4" DIAMETER OF LOUVER FRAME WITH 1/4" DIAMETER FASTENERS ON MAXIMUM 18" CENTERS. THE LOCATION OF 1/4" DIAMETER MOUNTING BOLTS SHOULD BE SUCH AS TO GIVE A MINIMUM OF 2 BOLTS ON A SIDE.

5. WIDTH AND HEIGHT DIMENSIONS ARE OPENING SIZES. LOUVERS ARE MADE UNDERSIZED, TYPICAL 1/8" AROUND PERIMETER OF LOUVER FRAME. LOUVERS WITH LARGER UNDERSIZING CAN BE SUPPLIED UPON REQUEST.

6. THESE ARE GENERAL MOUNTING ARRANGEMENTS FOR LOUVER WALL OPENINGS. VIEWS SHOWN SHOULD COVER MOST MOUNTING SITUATIONS ENCOUNTERED. LARGE MULTIPLE WIDE AND / OR HIGH LOUVER PANEL ASSEMBLIES REQUIRE STRUCTURAL SUPPORT ON INTERIOR OF LOUVER PANELS WHICH CAN BE PROVIDED AT AN ADDITIONAL COST.

7. REFER TO LOUVER MULLION INSTALLATION INSTRUCTIONS ON PAGE 1 AS REQUIRED.

8. BECAUSE LOCAL BUILDING CODES AND INSTALLATION STANDARDS MAY VARY FROM OUR RECOMMENDED MINIMUMS WE RECOMMEND THAT THEY BE USED OVER OURS WHEN AND WHERE REQUIRED.



STANDARD INSTALLATION METHODS

REV 3

DATED: MAY 2003

PAGE 2 of 2

DATED: DEC 2002